



Baxter Mews, Wadsley Bridge, S6 1LG

£155,000

🛏 2 🚿 2 🛋 1



Why We Love It

Situated in the heart of Wadsley Bridge, surrounded by local amenities, including shops, restaurants, and parks. You also take full advantage of excellent transport links, connecting you to Sheffield city centre and beyond. Public transportation options and major roadways are easily accessible.

Why You'll Love It

Ascend to the first floor this 2-bedroom residence boasts a sense of exclusivity and luxury. The open-plan layout enhances the sense of space, creating a seamless flow between the living, dining, and kitchen areas. The contemporary kitchen is a culinary haven, equipped with modern appliances and sleek finishes. Whether you're a seasoned chef or a casual cook, this space caters to your culinary desires. The apartment features two well-appointed bedrooms, the master with an en-suite shower room as well as the principal bathroom/w.c..

Baxter Mews offers more than just a home; it provides a secure living environment. With secure access, residents can have peace of mind and a heightened sense of privacy. Enjoy the convenience and peace of mind that comes with secure undercroft gated parking.

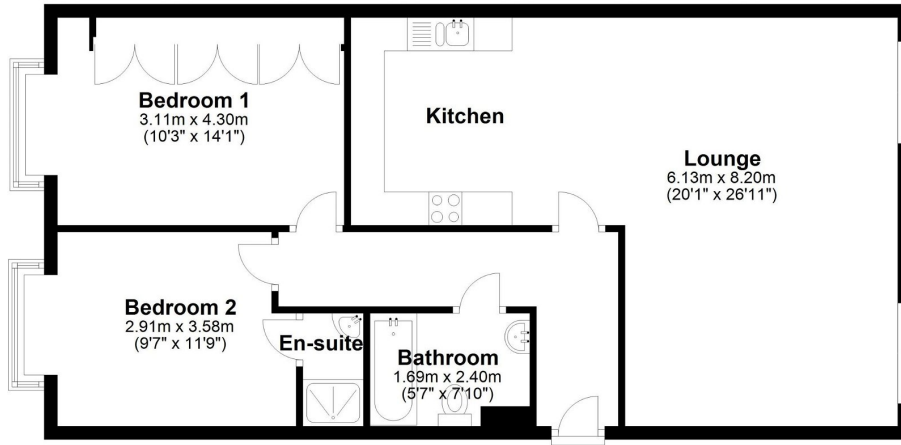
MATERIAL INFORMATION

Lease Term 600 years from 31 August 2001

Lease Term Remaining 578 years



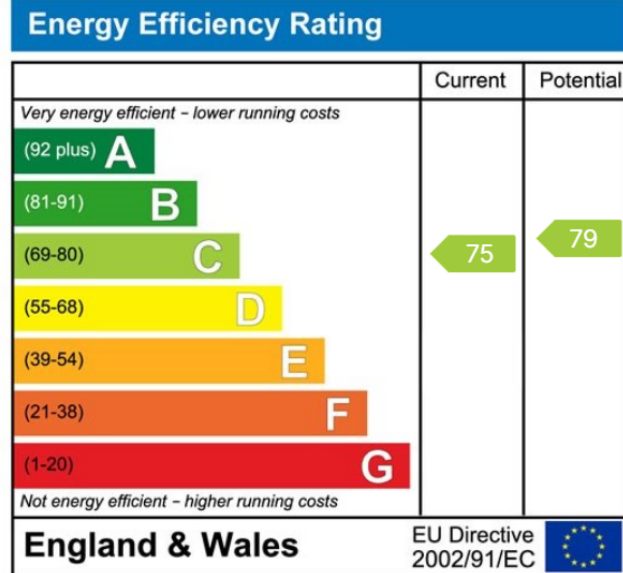
Approx. 78.0 sq. metres (839.1 sq. feet)



Total area: approx. 78.0 sq. metres (839.1 sq. feet)



- A former mill conversion
- Gas central heating and double glazed
- First floor accommodation
- Open plan lounge/dining room and kitchen
- Two double bedrooms
- En-suite shower room and principal bathroom/w.c.
- Undercroft car parking
- Visitors parking
- Close to the Kilner Way Retail Park
- Early Completion Available



Sales | Lettings | New Homes

VAT Reg Number: 191 3588 84
Company Reg Number: 08610489
Company Reg Address: 67 Middlewood Road, Hillsborough, Sheffield, S6 4GX.

The MorfittSmith Building
67 Middlewood Road
Hillsborough
Sheffield
S6 4GX

Get in touch - arrange an appointment



0114 232 1764



sales@morfittsmith.co.uk
lettings@morfittsmith.co.uk
newhomes@morfittsmith.co.uk



www.morfittsmith.co.uk



@MorfittSmith



@MorfittSmith



MorfittSmith
Estate & Letting Agent